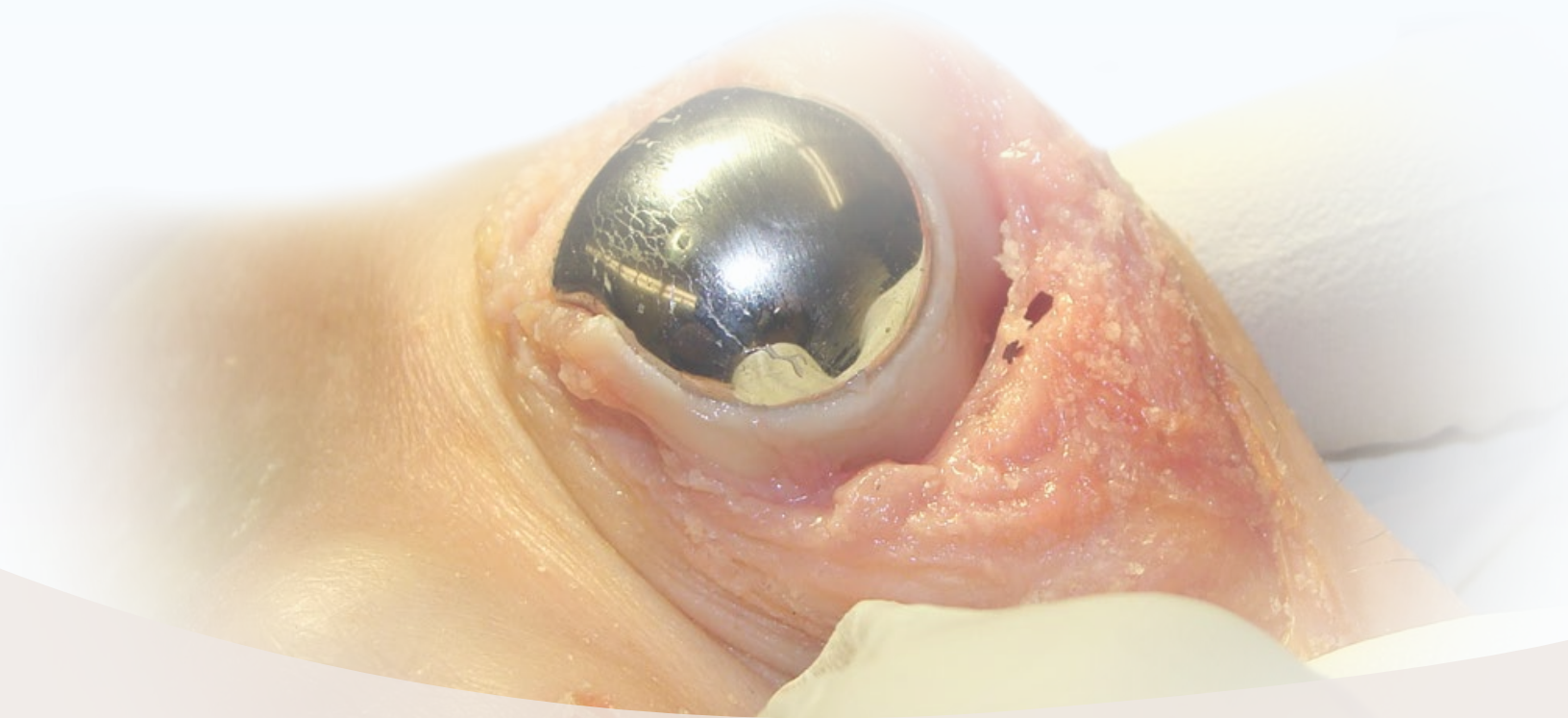


# PROVEN RESULTS

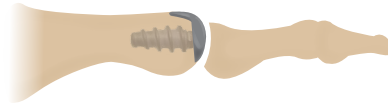
*The HemiCAP<sup>DF</sup> has **rock solid fixation**, a **unique metatarsal based design** and a **proven clinical history** with over 20,000 MTP implants.*



“Radiographic evaluation of the HemiCAP prosthesis in 56 patients demonstrated no significant evidence of loosening; it appeared to show **superior radiographic results** compared to those of other metallic implants using a stemmed design.”

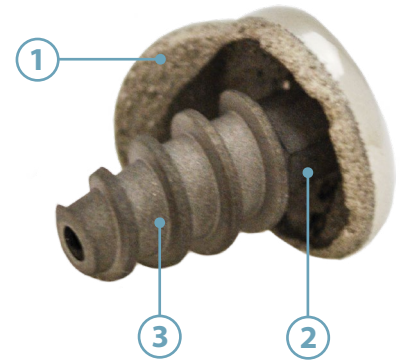
arthrosurface®

## ROCK SOLID FIXATION



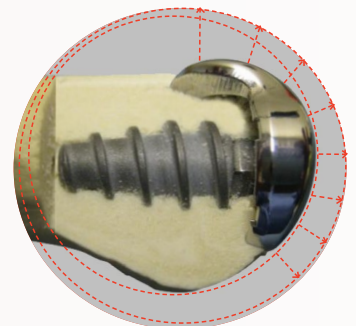
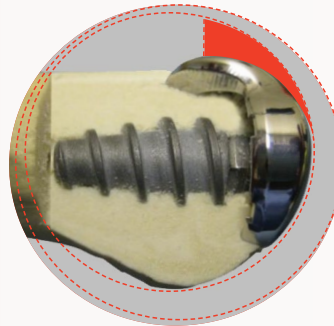
Screw based fixation provides a **stable** implant

- (1) Ti Plasma spray undercoating with line to line bone to implant fit
- (2) Morse Taper interlocks the two components
- (3) Bead blasted screw surface provides superior fixation

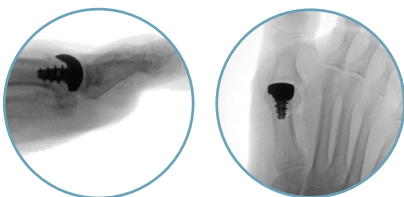


## UNIQUE DESIGN

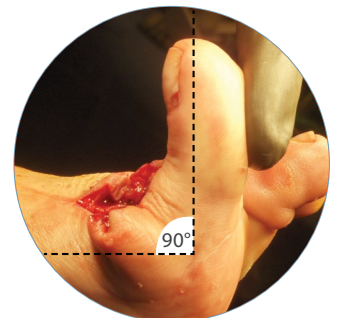
- Dual implant curvatures** improve dorsal roll-off
- Super smooth** articulating CoCr surface
- Conical shape** to optimize bone-screw interface
- Standardized thread pitch** for precise depth



## PROVEN RESULTS



- ✓ 8 years of MTP clinical history
- ✓ Over 20,000 MTP implants
- ✓ No reported implant dissociation or subsidence



28 Forge Parkway • Franklin, MA 02038  
1 508 520 3003  
fax: 1 508 528 4604  
For more information, visit our website:  
[www.arthrosurface.com](http://www.arthrosurface.com)

© 2012 Arthrosurface, Inc. All rights reserved